

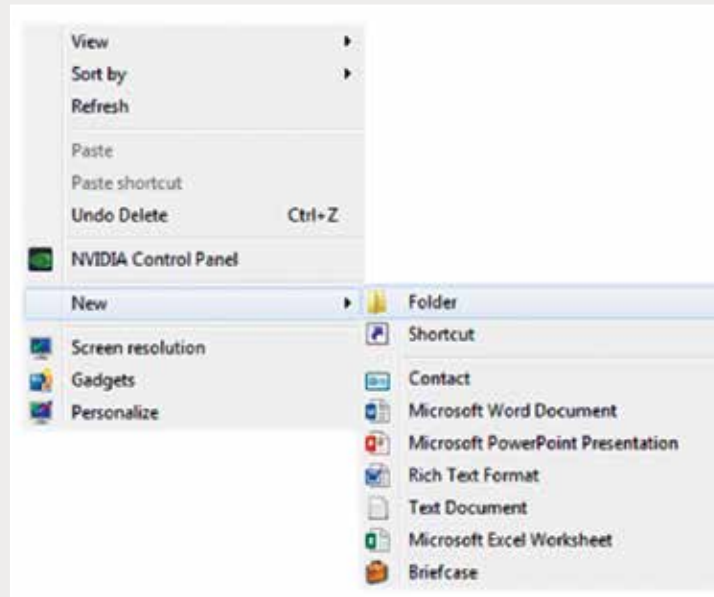
EXPORTING FROM **Planmeca**

UPLOAD GUIDE



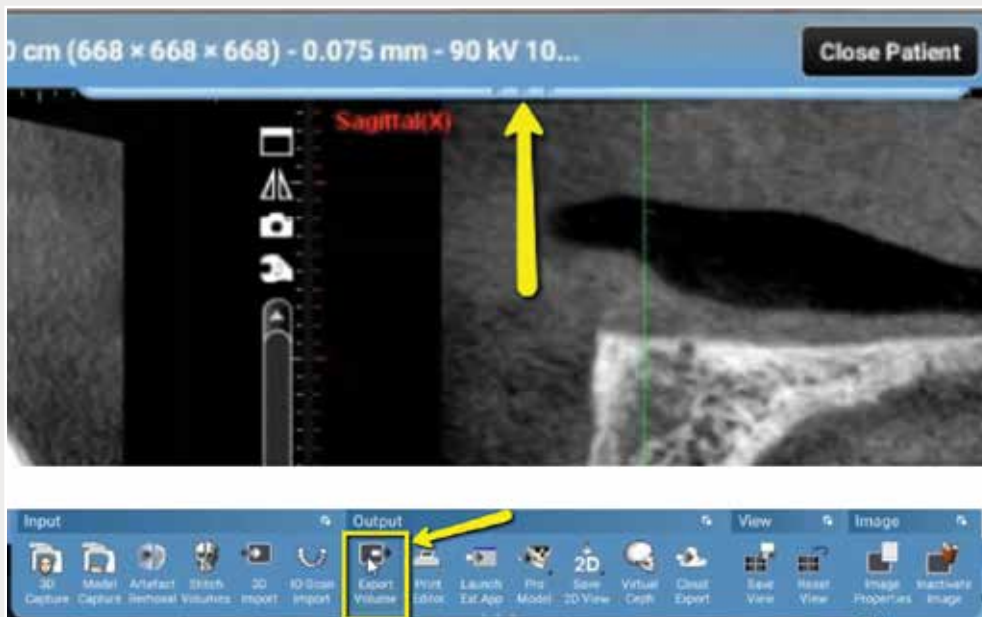
866-497-3692 • glidewelldental.com

Note: If using the Instrumentarium Dental OP300 or Gendex GXDP-700™, instructions will not apply. Please contact your local representative for assistance on extracting the raw data from your CT scanner.



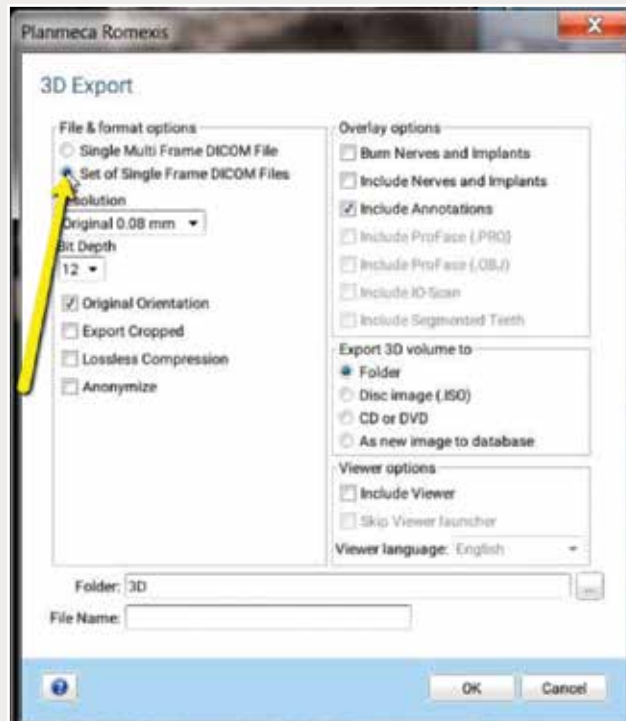
Step 1: Right-click on an empty space on your desktop to create a new folder ("New" → "Folder"). Type in the patient name and click "Enter".

1



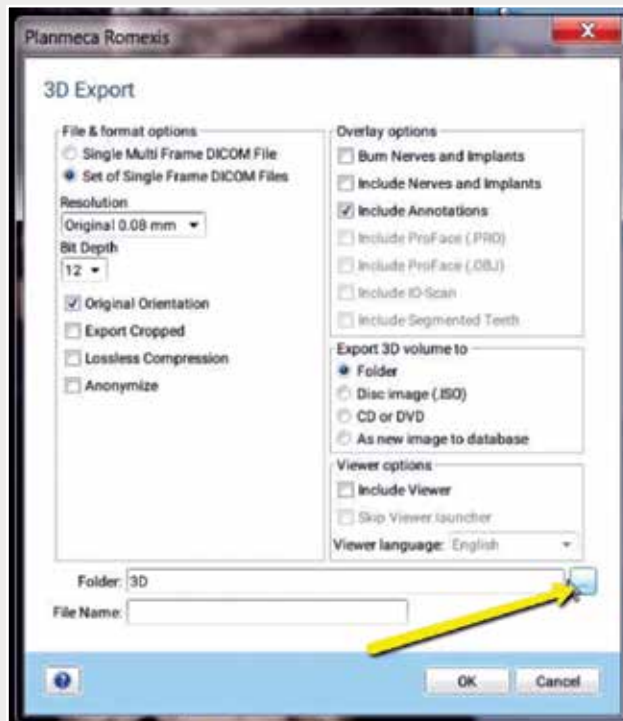
Step 2: Open the patient's scan. Hover over the drop-down menu located on top of the screen. Select "Export Volume" under the "Output" section.

Note: If using the Instrumentarium Dental OP300 or Gendex GXDP-700™, instructions will not apply. Please contact your local representative for assistance on extracting the raw data from your CT scanner.



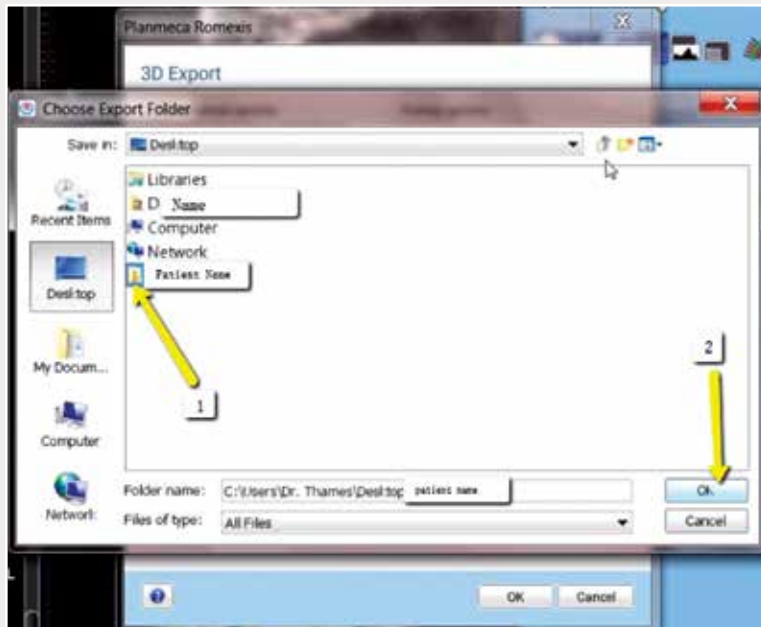
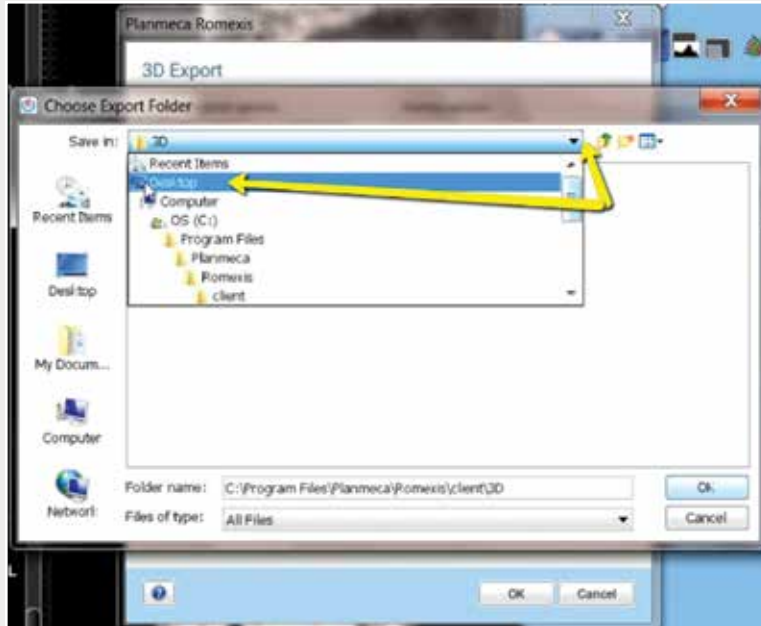
Step 3: Select "Set of Single Frame DICOM Files" under "File & format options" section. No other options should have to be changed in the other sections.

2



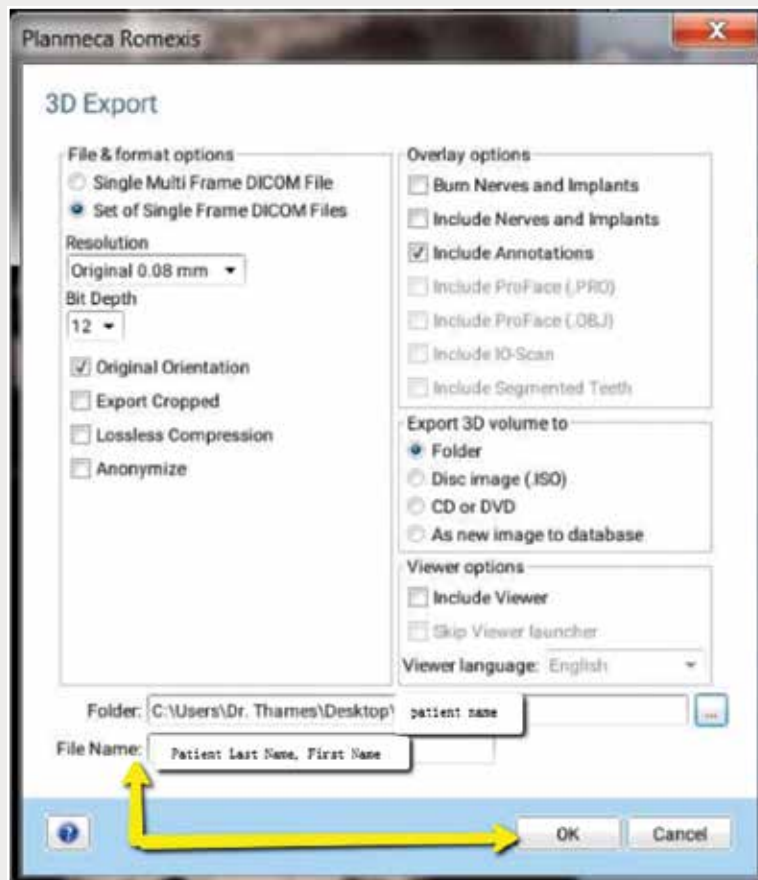
Step 4: Click on the "..." button to select a destination to export the files.

Note: If using the Instrumentarium Dental OP300 or Gendex GXDP-700™, instructions will not apply. Please contact your local representative for assistance on extracting the raw data from your CT scanner.

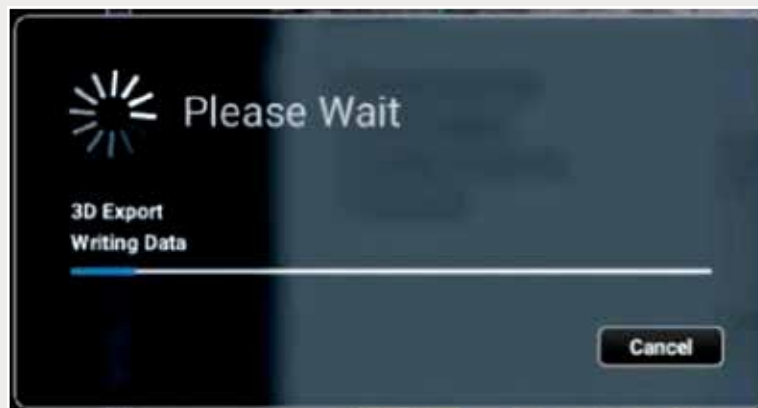


Step 5: Select your newly created folder from your desktop and click "OK".

Note: If using the Instrumentarium Dental OP300 or Gendex GXDP-700™, instructions will not apply. Please contact your local representative for assistance on extracting the raw data from your CT scanner.

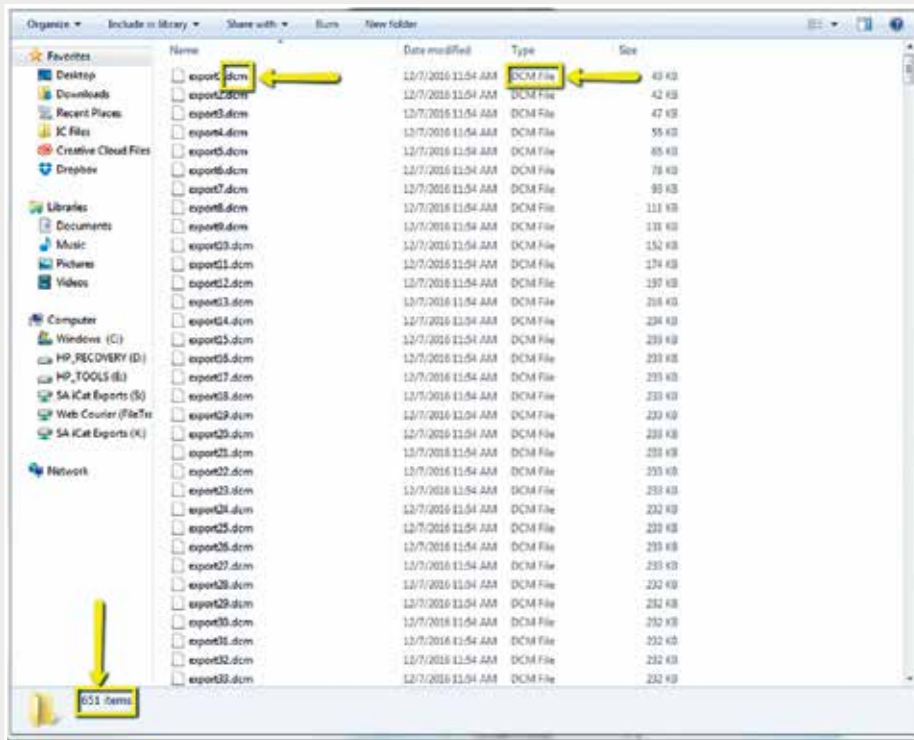


4

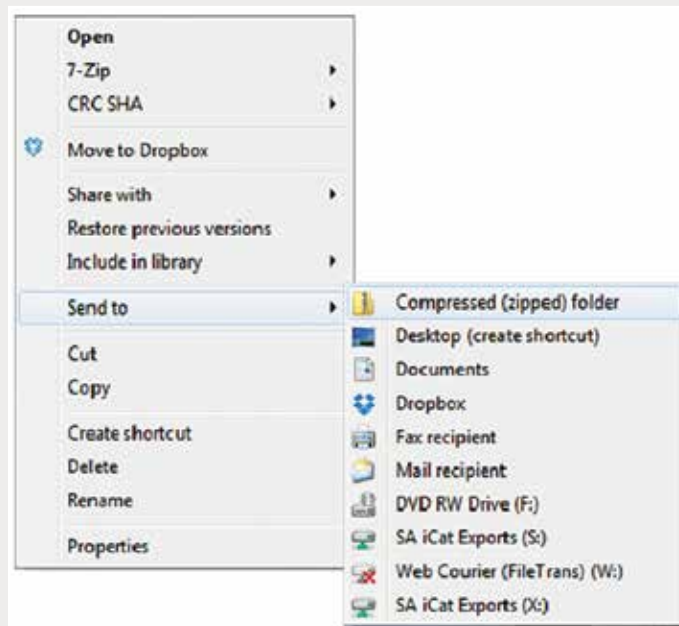


Step 6: For "File Name", enter the patient's last and first name, then click "OK", and the files will export.

Note: If using the Instrumentarium Dental OP300 or Gendex GXDP-700™, instructions will not apply. Please contact your local representative for assistance on extracting the raw data from your CT scanner.



Step 7: Go to the patient's folder and confirm the .dcm files were exported correctly (there should be several hundred files).



Step 8: Return to your desktop and right-click on the patient's folder to send to a compressed folder ("Send to" → "Compressed (zipped) folder"). A duplicate folder will be created with either a zipper or a blue "Z".

Note: If following a Dual Scan Protocol, zip scans individually and label accordingly (i.e., "Patient Scan" and "Denture Scan").

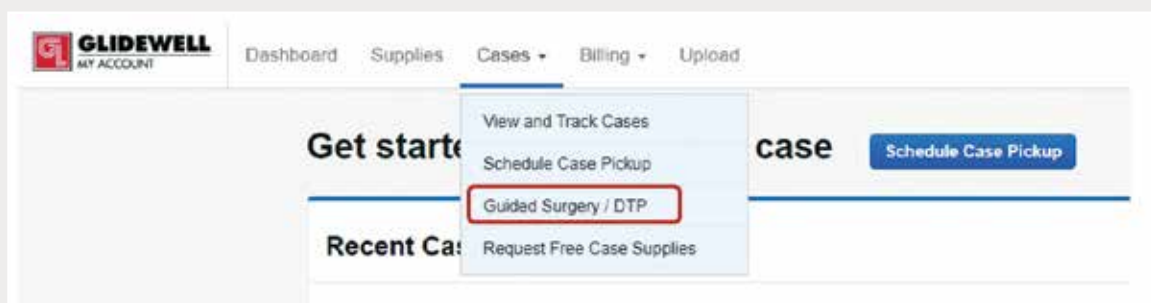
Note: If using the Instrumentarium Dental OP300 or Gendex GXDP-700™, instructions will not apply. Please contact your local representative for assistance on extracting the raw data from your CT scanner.



Step 9: Upload your case on glidewelldental.com, then click and log in to "My Account".

Note: Use Google Chrome when uploading your case; additionally, if you do not have an account, please contact us and we will set it up for you. Your scan can also be sent on a disc or USB drive via standard shipping methods if digital upload is not possible.

6



Step 10: Select "Cases" → "Guided Surgery/DTP".

Note: If using the Instrumentarium Dental OP300 or Gendex GXDP-700™, instructions will not apply. Please contact your local representative for assistance on extracting the raw data from your CT scanner.

Guided Surgery & Digital Treatment Planning Cases

All ▾

[Request New Plan](#)

Step 11: Select "Request New Plan".

Request a New Digital Treatment Plan

We use the Hahn Implant System for our digital treatment plans to bring you the best options and prices.

	BEST VALUE
Surgical Guide with Treatment Plan	Hahn Surgical Guide Bundle
\$295	\$395
for the first implant	for the first implant
\$100 each additional implant per arch	\$200 each additional implant per arch
Select Option	Select Option
What's included:	What's included:
<ul style="list-style-type: none">✓ Treatment Plan & Surgical Guide	<ul style="list-style-type: none">✓ Treatment Plan & Surgical Guide✓ Hahn Tapered Implant✓ Healing Abutment✓ Impression Coping / Scan Body

Step 12: Select desired package.