

DTP

DIGITAL TREATMENT PLANNING

STEP-BY-STEP CLINICAL GUIDE — SURGICAL APPOINTMENT



FOR USE WITH BONE-SUPPORTED SURGICAL GUIDES

What You Have Received from Glidewell

- Surgical Report
- Surgical Guide with Guide Sleeve(s)

What You Should Order Prior to Day of Surgery

- Implant(s)
- Anchor Pin(s)
- Anchor Pin Osteotomy Drill
(ordering a second for backup is recommended)
- Healing abutment(s)
- Multi-Unit Abutments (optional)
- Multi-Unit Abutment Cover Caps (optional)
- Bone profilers (if wide healing abutments or multi-unit abutments are planned)



Step 1: Reflect a full-thickness flap, extending the flap to ensure the guide fully seats on the bone.



Step 2: Try in the surgical guide and verify fit by ensuring the guide does not rock and is flush with the bone.

Step 3: Holding the guide in place, drill osteotomies for anchor pins and place the anchor pins.



Step 7: Based on the torque and stability of the implant, determine the best loading protocol:

- Cover Screw — hand-tighten
- Healing Abutment — hand-tighten
- Multi-Unit Abutment — implant manufacturer's recommended torque value

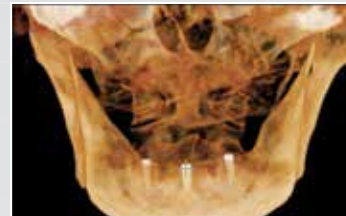


Step 8: Suture the soft tissue.

Step 4: Sequentially drill osteotomies according to the surgical guide protocol and implant manufacturer's recommended guidelines.

Step 5: Place implant(s) according to the manufacturer's recommended guidelines.

Step 6: Remove the surgical guide.



Step 9: Take radiograph to confirm implant positioning.

For more information
glidewell.com/dtp ■ 866-497-3692

